

Public and Private Fuel Management in the WUI and Beyond- Plumas County

Michael De Lasaux
Natural Resources Advisor
University of California Cooperative Extension

Untreated

Treated

Pre- and Post-Wildfire Forest Management For
Ecological Restoration and Fire Resiliency Conference

February 9-11, 2010



Photo by Hurley

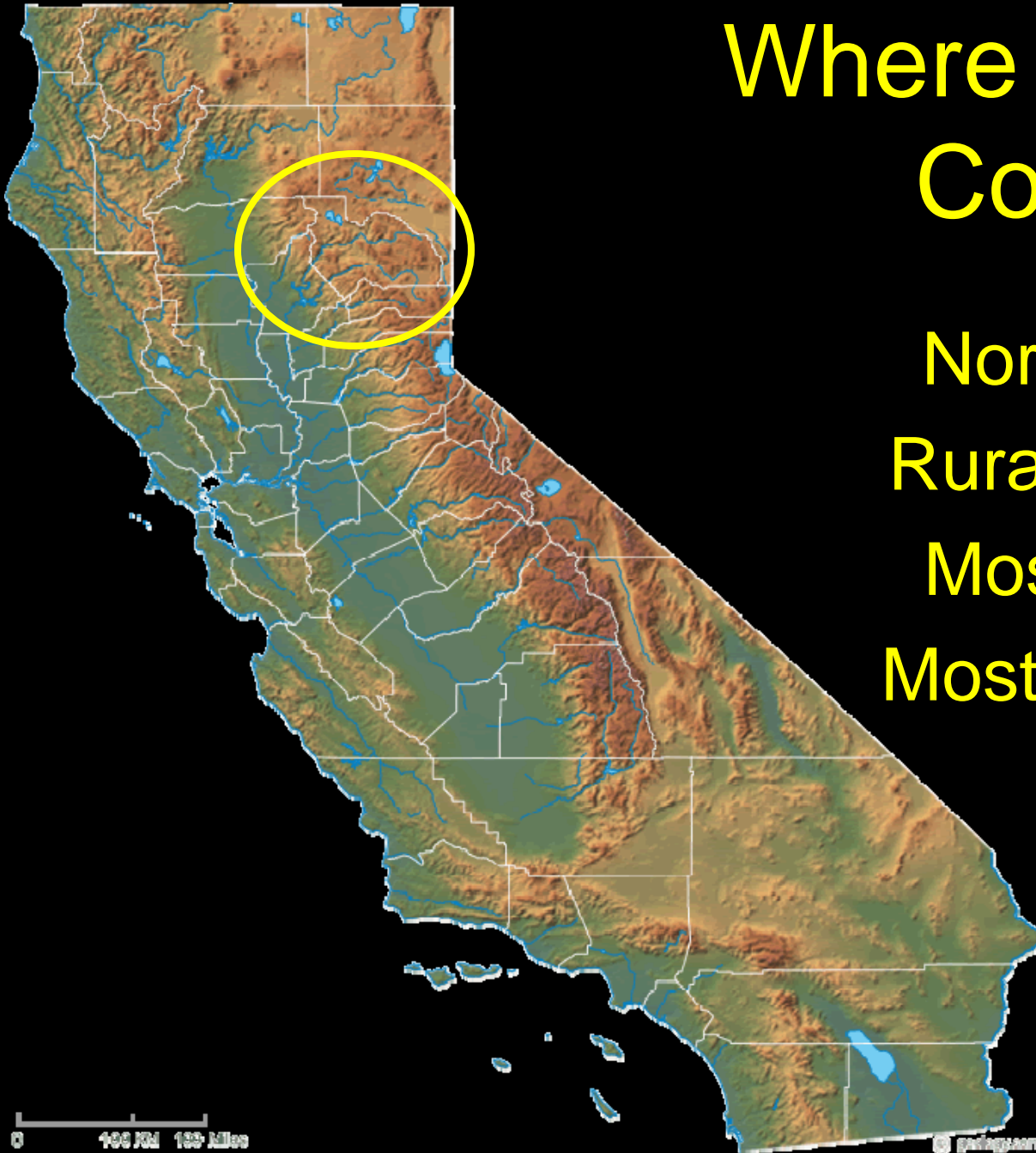
A photograph of a forest with many thin tree trunks and a ground covered in dry sticks and leaves. The text is overlaid on the left side of the image.

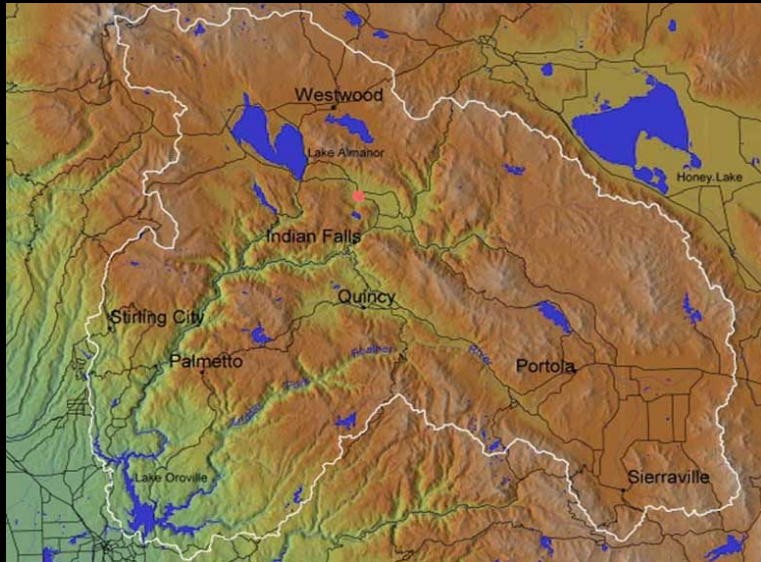
Presentation Outline

- Brief overview of forest and fuel conditions
- Pre-wildfire fuel treatment
 - Accomplishments
 - Acres treated
- Coordination/Collaboration
- Monitoring & Research
- Fires & fuel treatment effects on suppression...
- Success stories

Where is Plumas County?

Northern Sierra
Rural (pop. ~21k)
Mostly forested
Mostly public land





Source: <http://feather-river-crm.org>



Source: <http://www.water.ca.gov/swp/swptoday.cfm>



Source: <http://www.water.ca.gov/swp/swptoday.cfm>

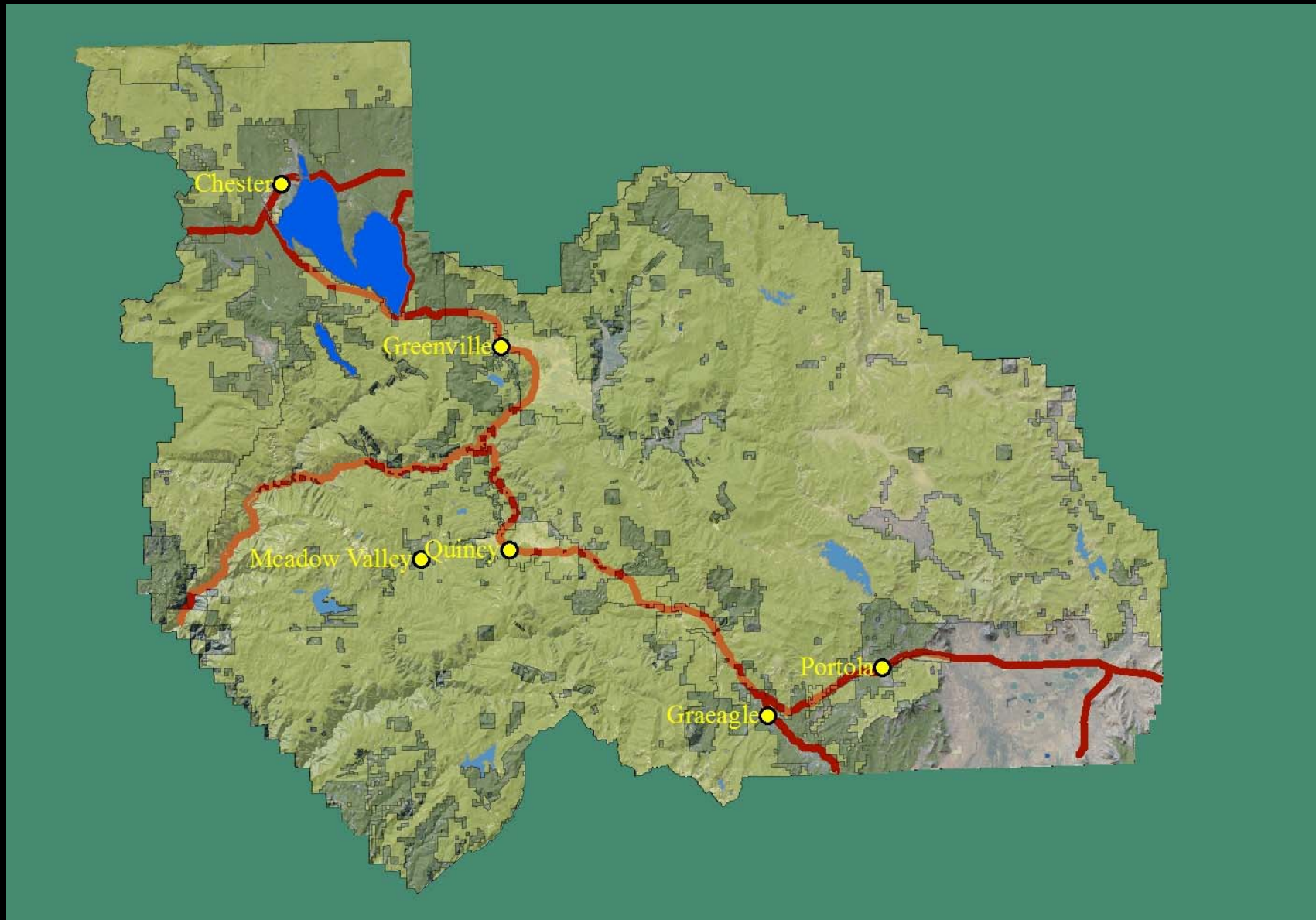


Source: <http://www.water.ca.gov/swp/swptoday.cfm>

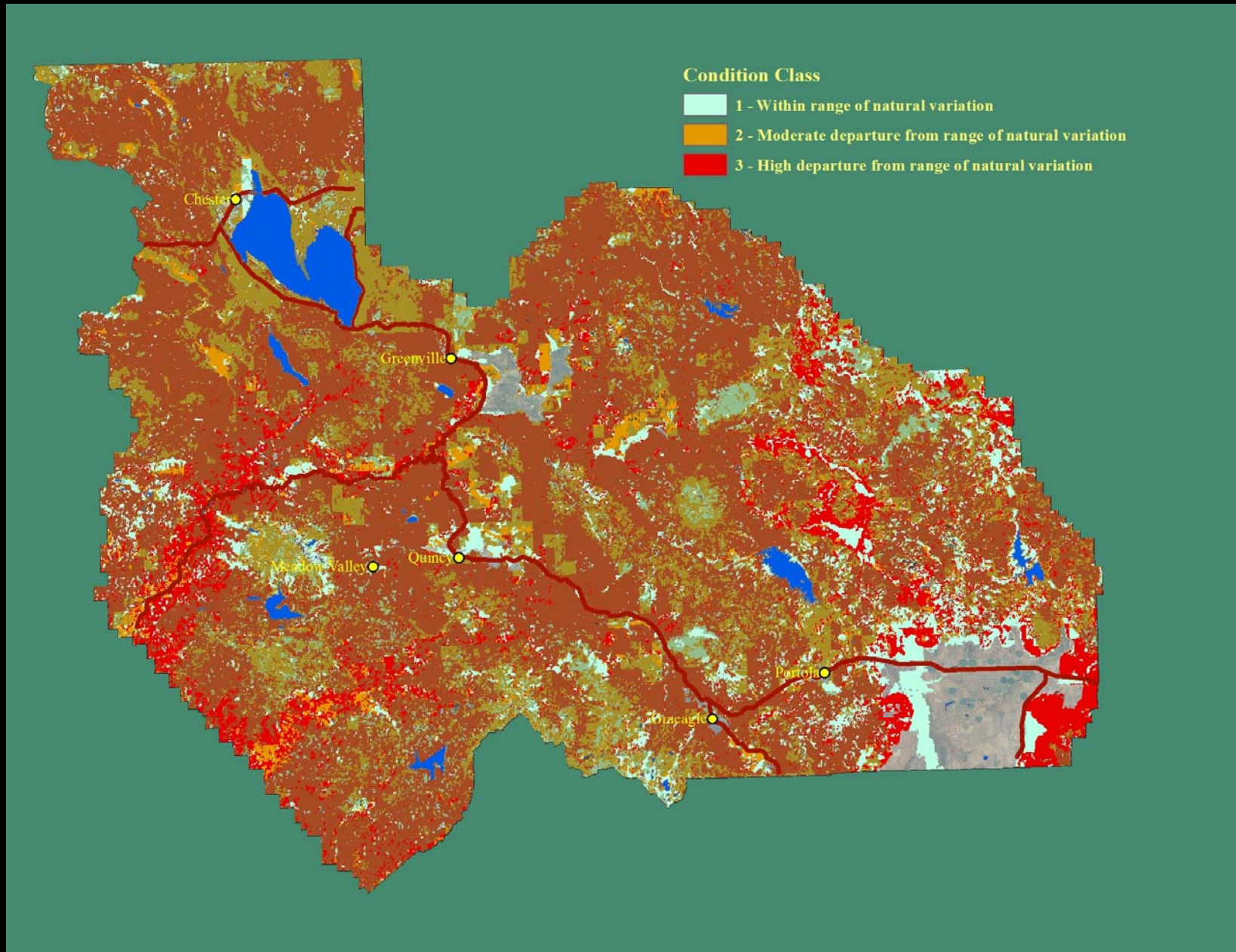
Forest Cover



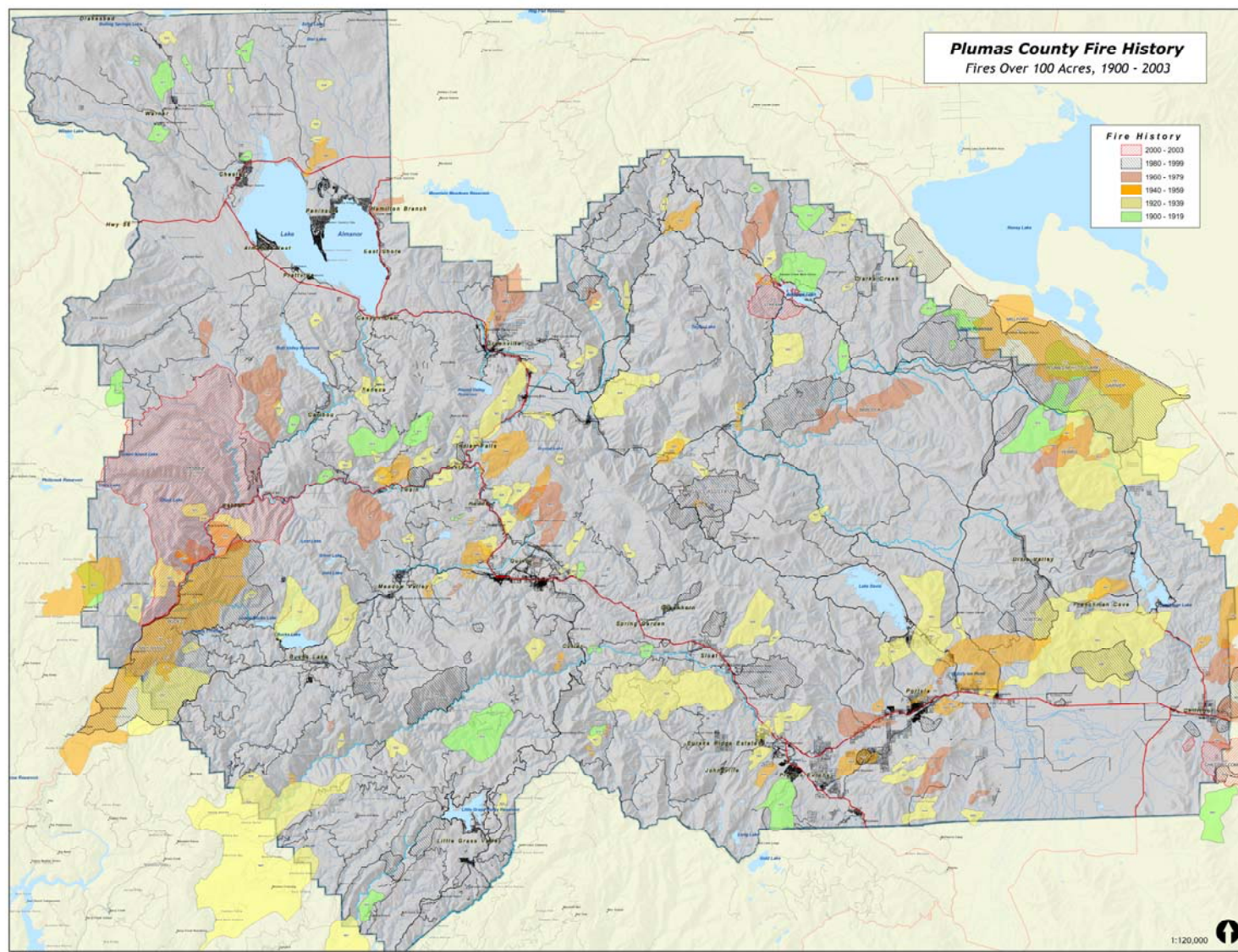
National Forest



Condition Class



Plumas County Fire History



Chronology of Pre-Wildfire Treatment

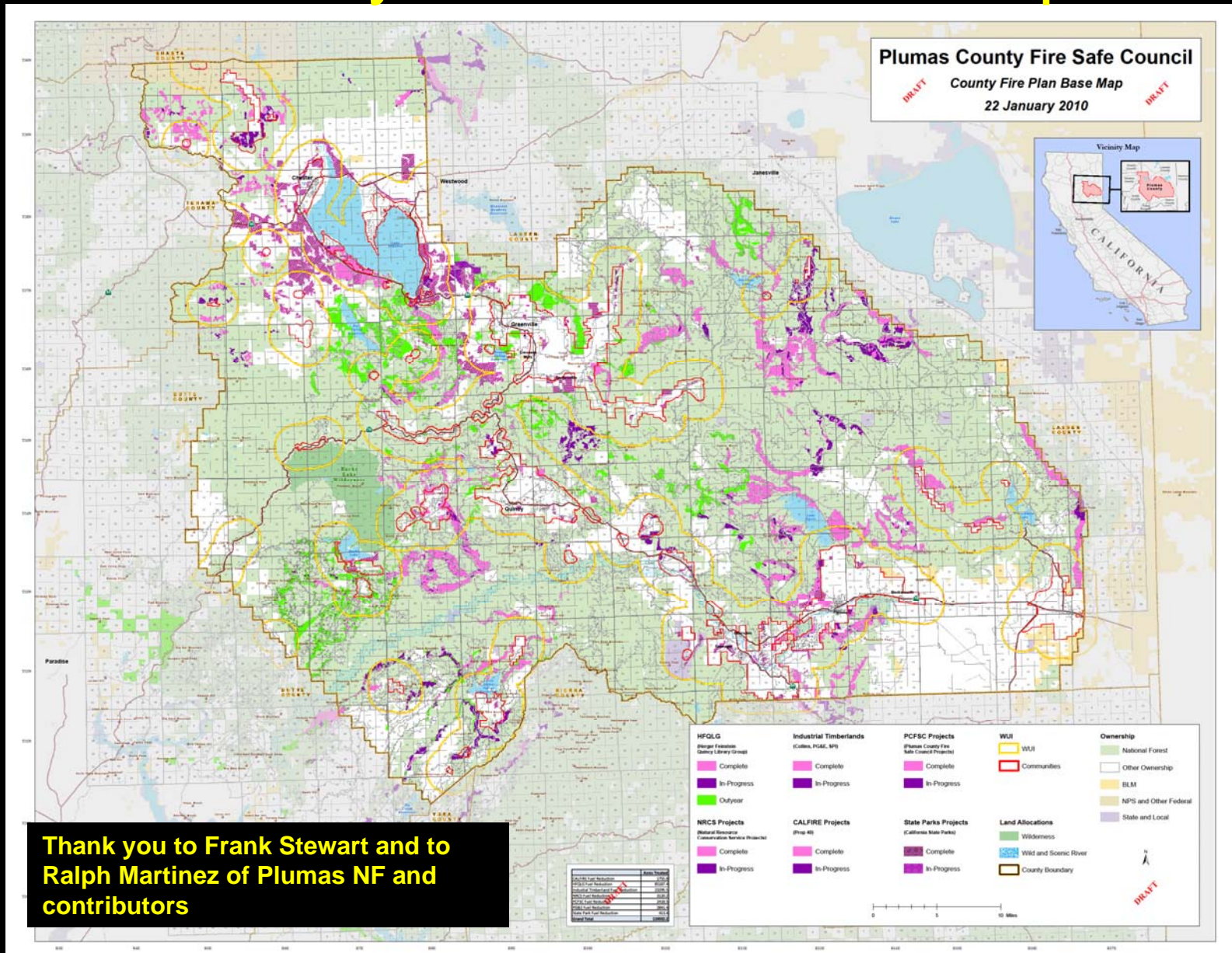
- C.1983- Biomass infrastructure development in northern Sierra.
- 1980's forward- Forest industry and Forest Service use of biomass harvesting to reduce fuel and for silvicultural reasons.
- 1993- Forest Service and QLG fuel reduction strategy that emphasized implementation of a strategic fuelbreak network at a specified pace & scale.
- 1997 HFQLG
- 1998 Plumas County Fire Safe Council
- 2001 - National Fire Plan & Secure Rural Schools & Communities Self-Determination Act
- California Proposition 40

County/Regional Fire Safe Councils serve as the hub to bring it all together at the local level for the collaborative development of fuel reduction and fire protection projects on private & public lands that are strategically implemented through the County/Community Wildfire Protection Plan & utilized for fire suppression activities by local, state and federal fire fighters.



Graphic by Stewart

County Fire Plan Base Map



- US Forest Service (HFQLG and ...)
- Plumas County Fire Safe Council
- Private Forest Landowners (industrial & non-industrial)
- Natural Resources Conservation Service
- Calfire (Prop. 40/CFIP)
- Plumas County Resource Advisory Committee
- Plumas County Board of Supervisors
- Plumas Corporation

"To reduce the loss of natural and manmade resources caused by wildfire through pre-fire activities."



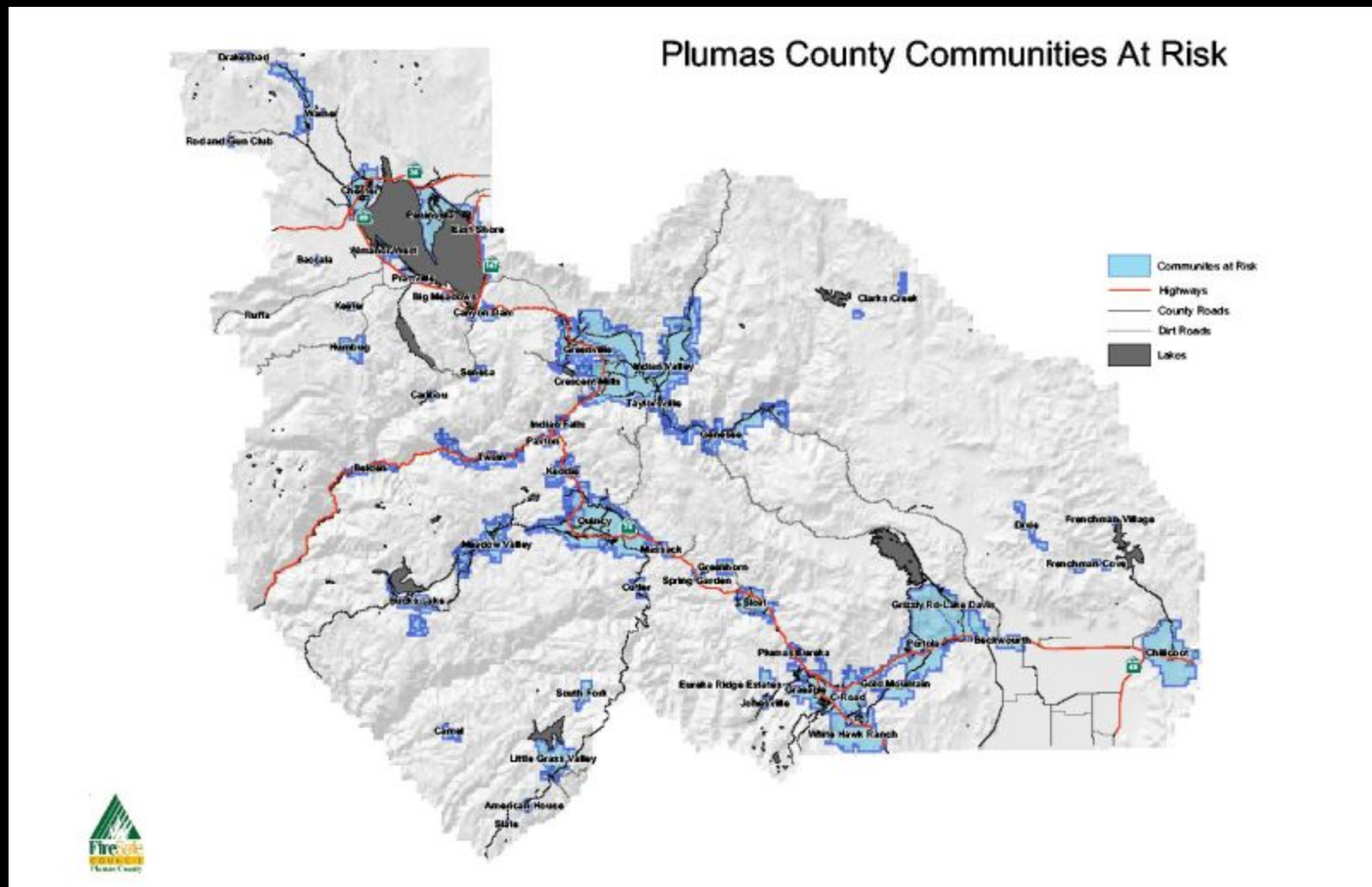
Recognized for outstanding accomplishments through their exceptional leadership, vision and perseverance in working collaboratively to reduce the risk of catastrophic wildfire in Plumas County, California.

Plumas County Fire Safe Council

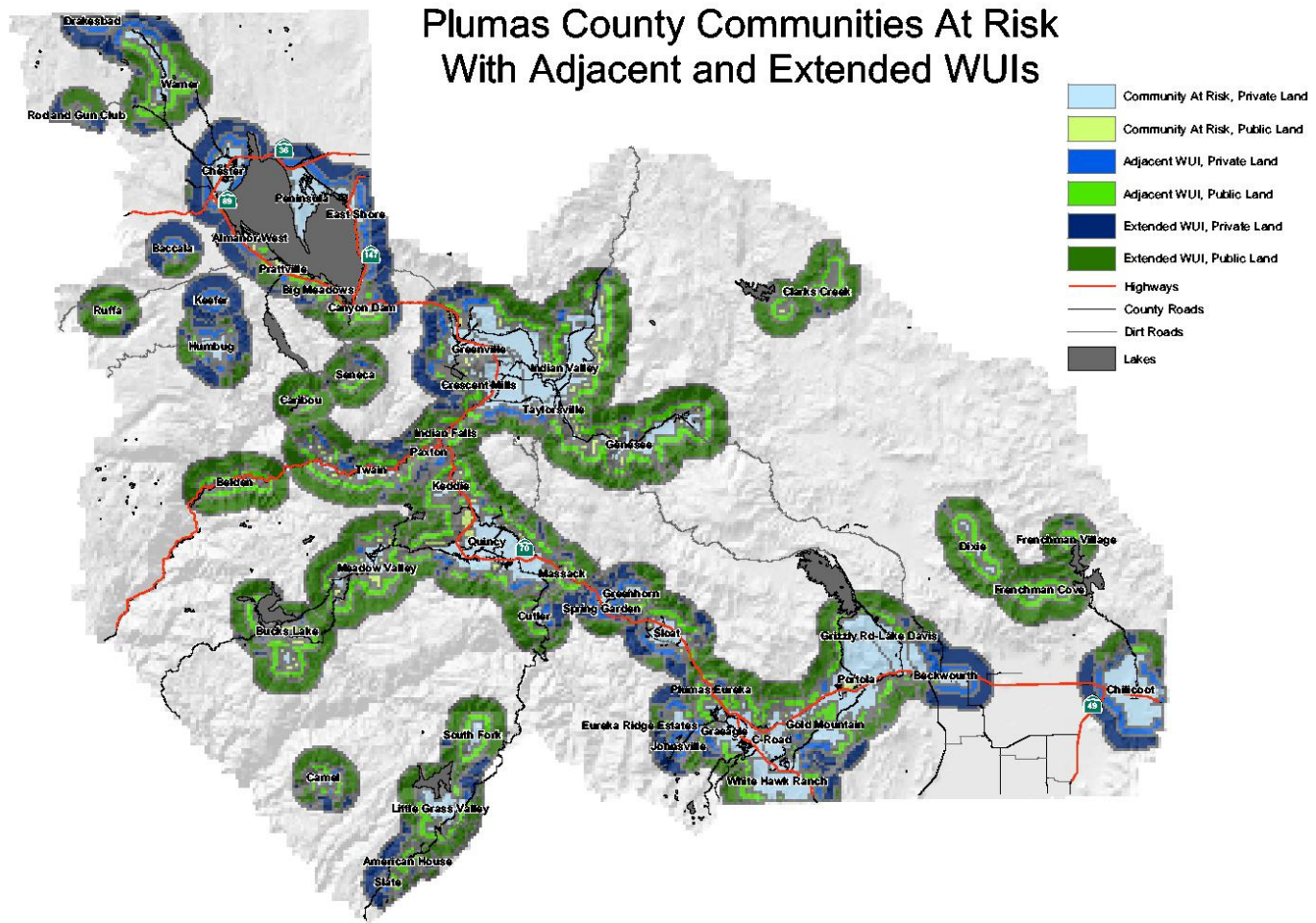
Major Accomplishments

- Communities @ risk identification

Communities at Risk and WUI defined



Communities at Risk and WUI defined



Plumas County Fire Safe Council

Major Accomplishments

- Communities @ risk identification
- Plumas County Hazardous Fuel Assessment and Strategy

Hazardous Fuel Assessment and Strategy

Specific Recommendations by Community



Hazardous Fuel Assessment and Strategy

- At least 10 communities have potential for “Active Crown Fire” per the Hazardous Fuel Assessment & Strategy.
- Another 9 have potential for “Passive Crown Fire”

Plumas County Fire Safe Council

Major Accomplishments

- Communities @ risk identification
- Plumas County Hazardous Fuel Assessment and Strategy
- Community Wildfire Protection Plan

Plumas County Fire Safe Council

Major Accomplishments

- Communities @ risk identification
- Plumas County Hazardous Fuel Assessment and Strategy
- Community Wildfire Protection Plan

Plumas County Fire Safe Council

Major Accomplishments

- Communities @ risk identification
- Plumas County Hazardous Fuel Assessment and Strategy
- Community Wildfire Protection Plan
- **Community fuel reduction**

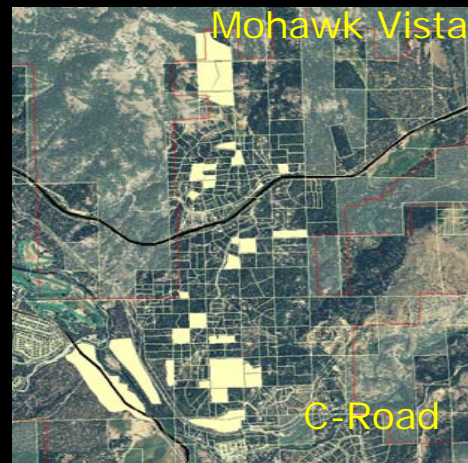
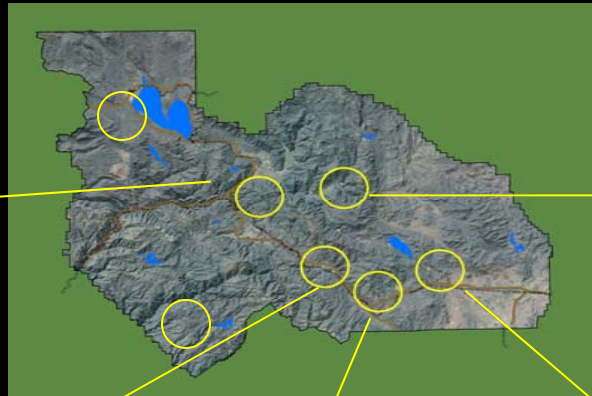
PCFSC Fuel Reduction Goals

- Treat surface, ladder and crown fuel to create a fire resilient forest to protect life, property and natural resources
- Goal is a 2-4 foot flame length.

PCFSC Community Fuel Reduction

	Community *	Year Treated	# of Acres Treated	# of Properties
1	Delleker North	2006	131	1
2	Indian Falls	2006	40	8
3	Grizzly Creek Road	2007	130	5
4	Whitehawk Ranch	2007	105	1
5	Massack	2008	125	1
6	West Lake Almanor	2008	13	2
7	C-Road II (Eastern Plumas Project)	2009	29	9
8	Greenhorn	2009	26	20
9	Indian Valley	2009	169	11
10	Mohawk Vista (Eastern Plumas Project)	2009	100	11
11	Long Valley	2005-2006	155	10
12	Red Clover Estates	2006-2007	73	24
13	C-Road	2006-2008	122	12
14	La Porte	2008-2009	111	1
15	LaPorte Road	2009-2010	87	7
		TOTAL	1416	123
	* Shaded rows are monitored community projects			

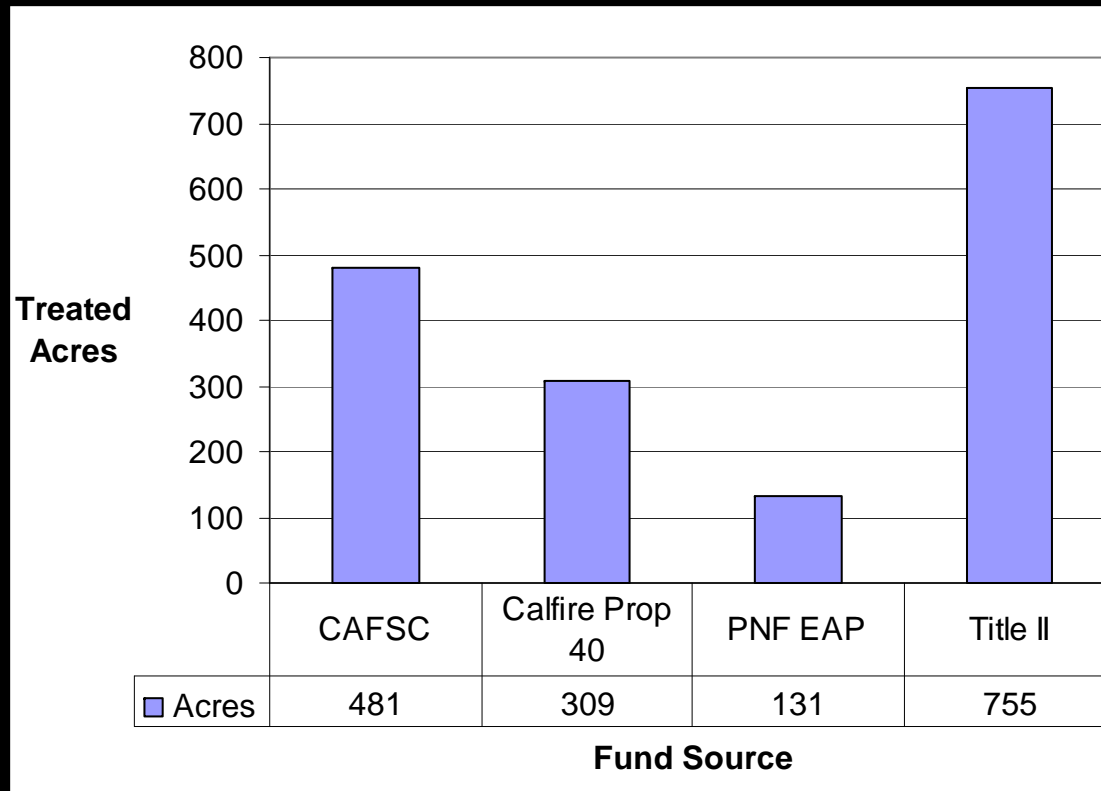
Selected PCFSC Projects



County/Regional Fire Safe Councils serve as the hub to bring it all together at the local level for the collaborative development of fuel reduction and fire protection projects on private & public lands that are strategically implemented through the County/Community Wildfire Protection Plan & utilized for fire suppression activities by local, state and federal fire fighters.

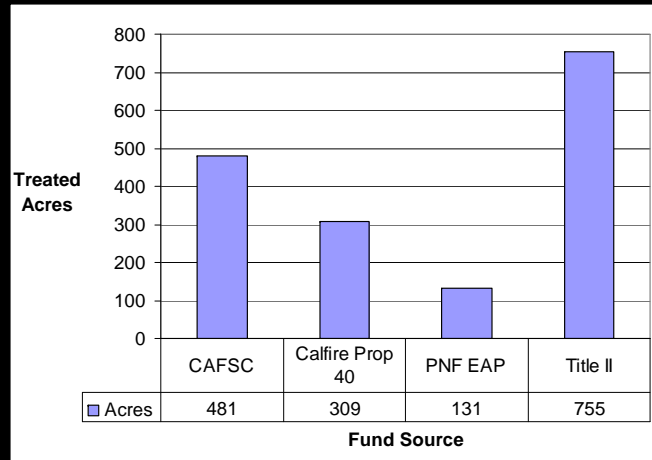


Funds and Sources

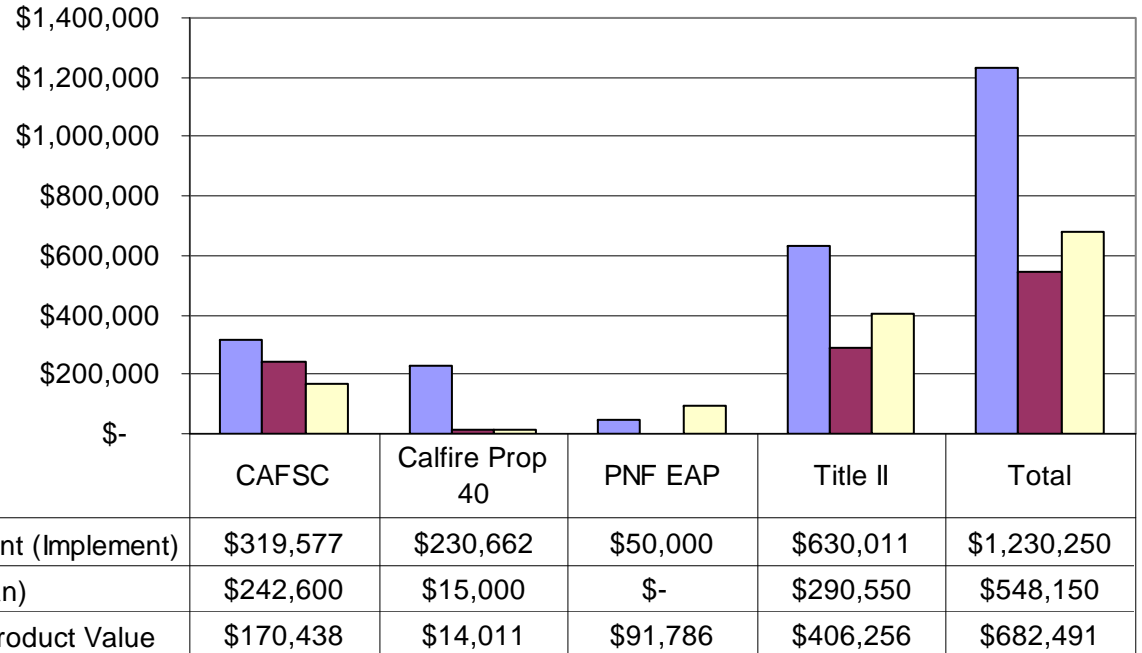


CAFSC - California Fire Safe Council
Calfire Prop 40
PNF EAP - Plumas NF Economic Action Program
Title II – Plumas NF, Secure Rural Schools

Funds and Sources



Fund Amount



CAFSC - California Fire Safe Council
 Calfire Prop 40
 PNF EAP - Plumas NF Economic Action Program
 Title II – Plumas NF, Secure Rural Schools

Utilization

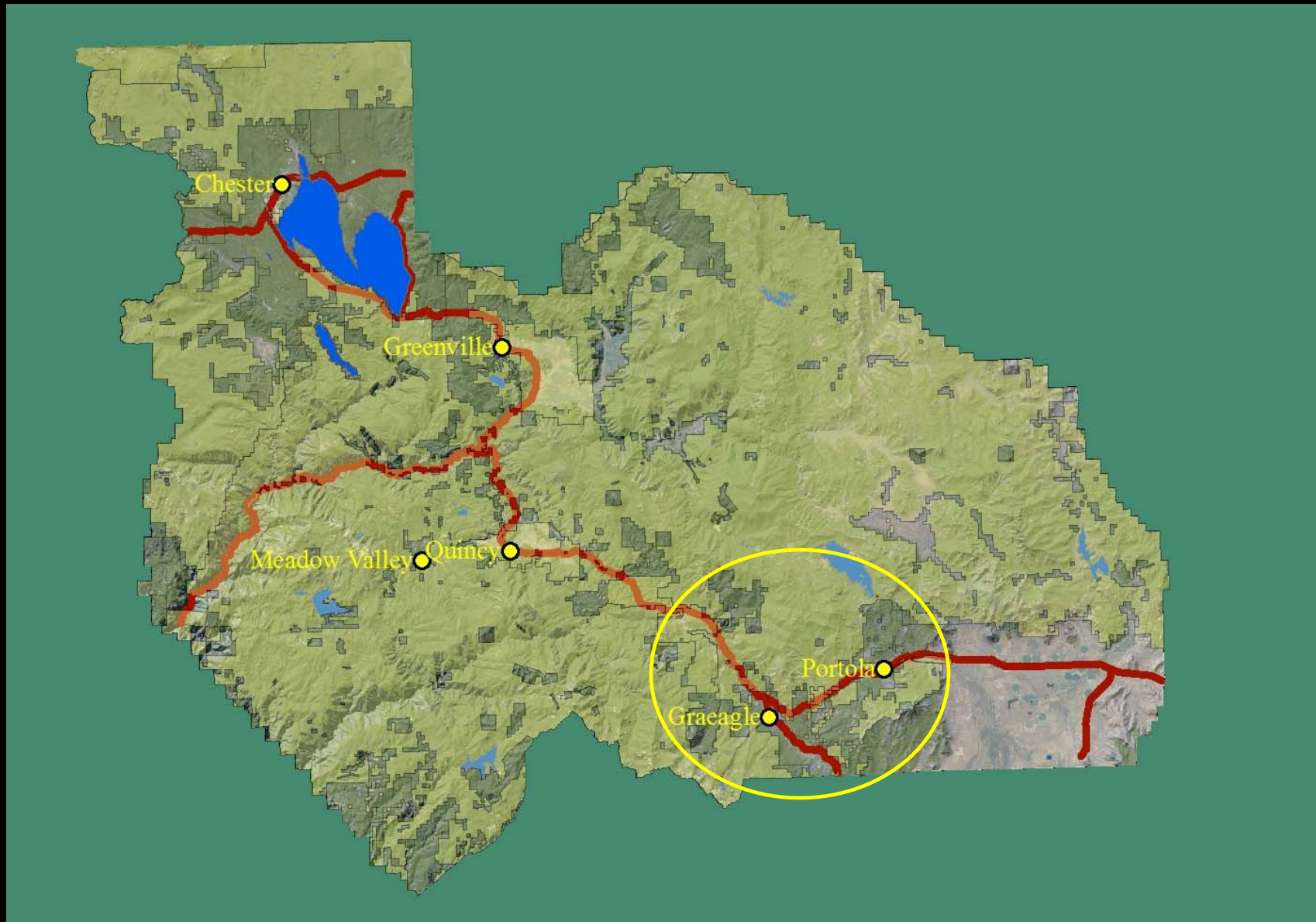


National Forest

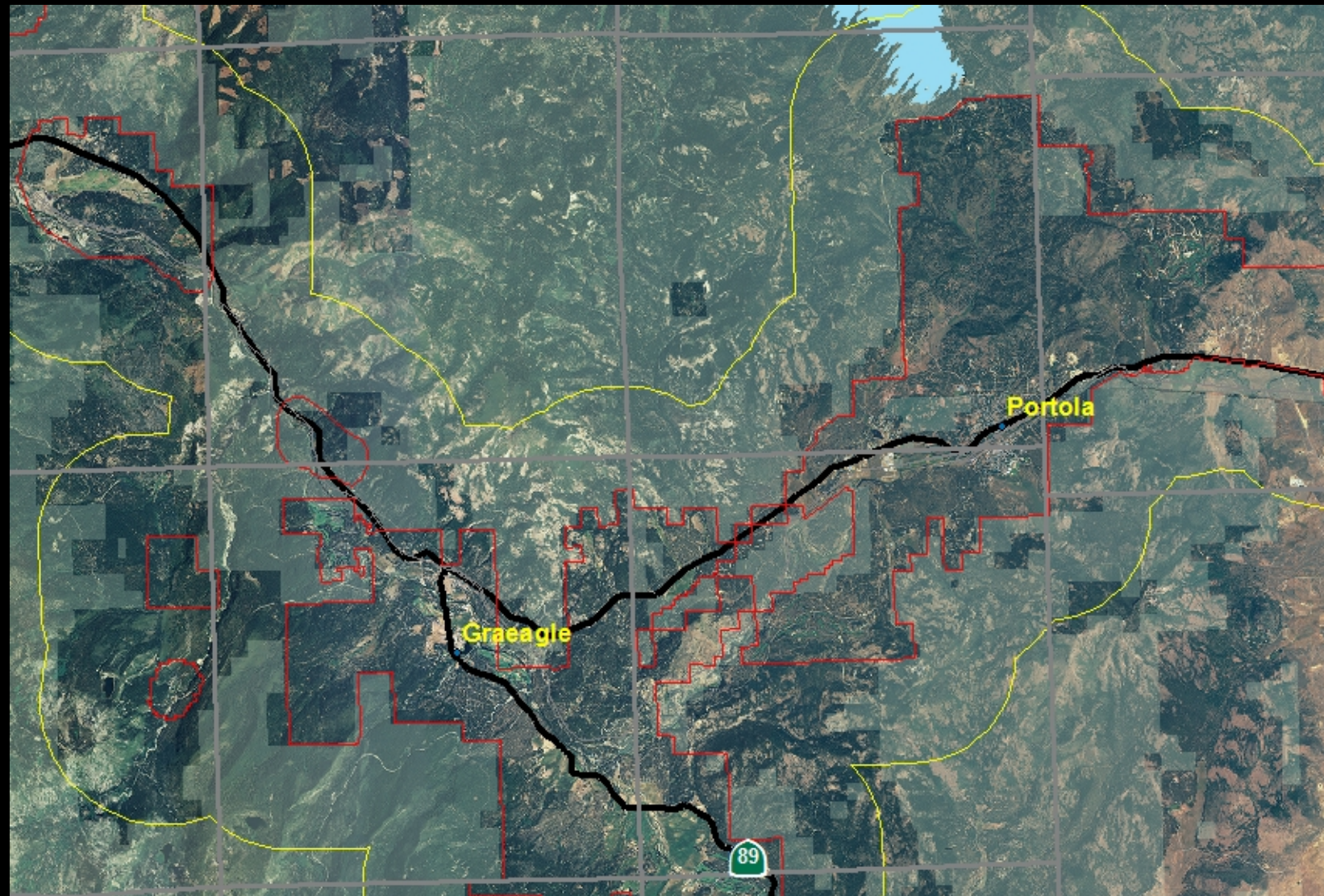
Herger-Feinstein Quincy Library Group

- Implement and demonstrate the effectiveness of resource management activities
- Promote local economic stability
- Create healthy, fire-resilient forests that maintain ecological integrity; and
- Construct a strategic network of fuelbreaks (Defensible Fuel Profile Zones or DFPZs) that provides for safe and effective fire suppression.

Pre-Fire Fuel Treatment

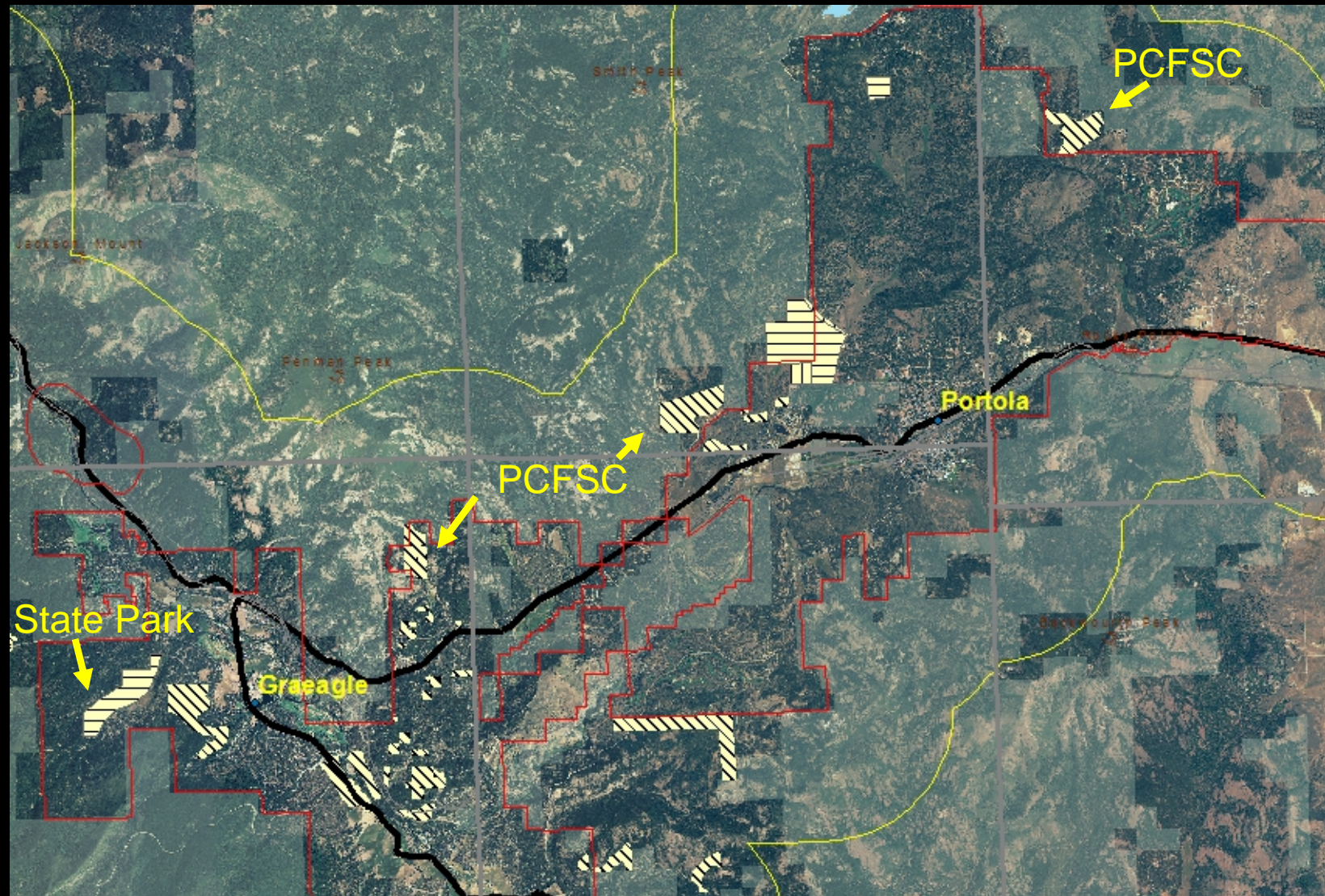


Graeagle & Portola area Fuel Reduction Accomplishments



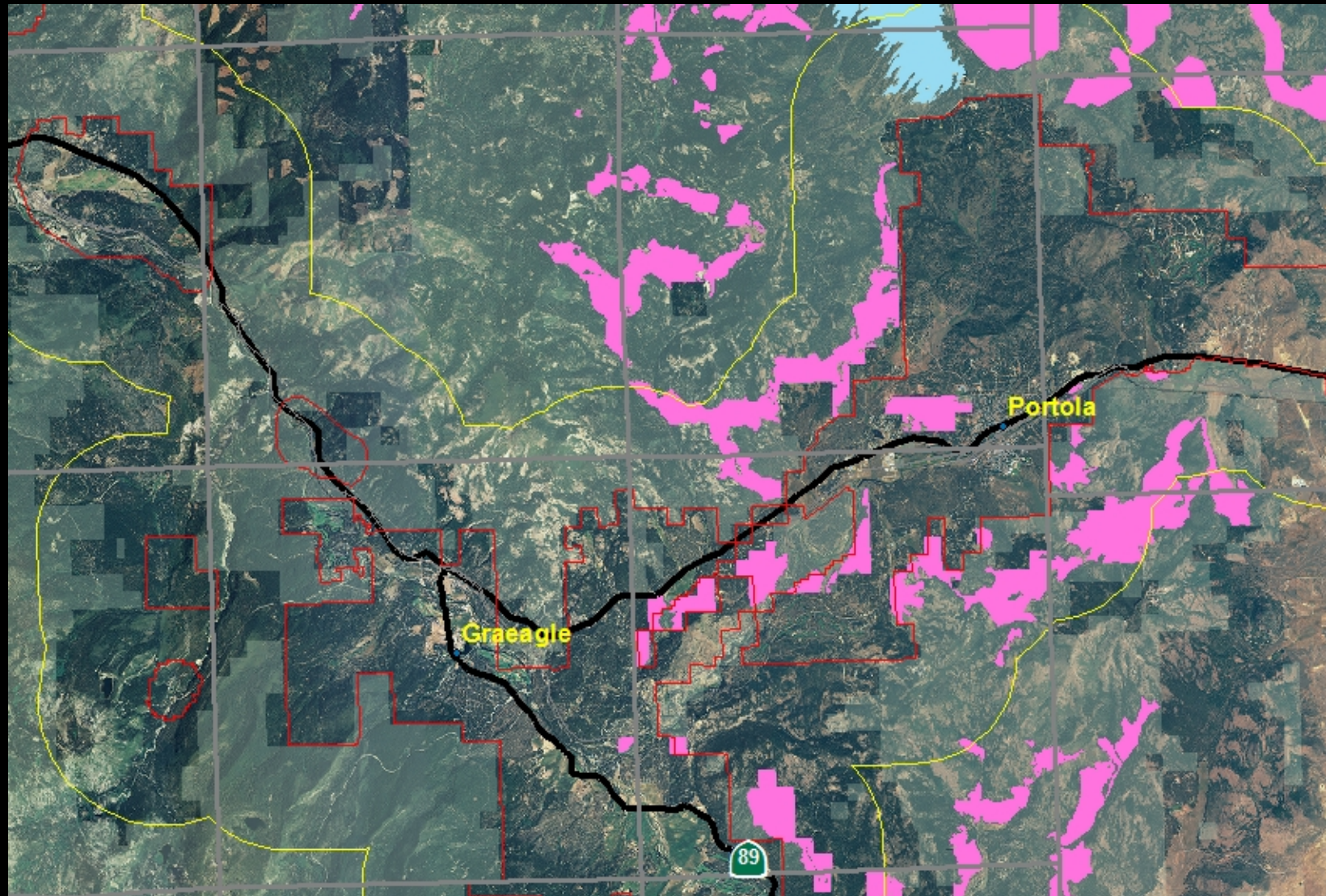
Graeagle & Portola area Fuel Reduction Accomplishments

Non-Federal Treatments



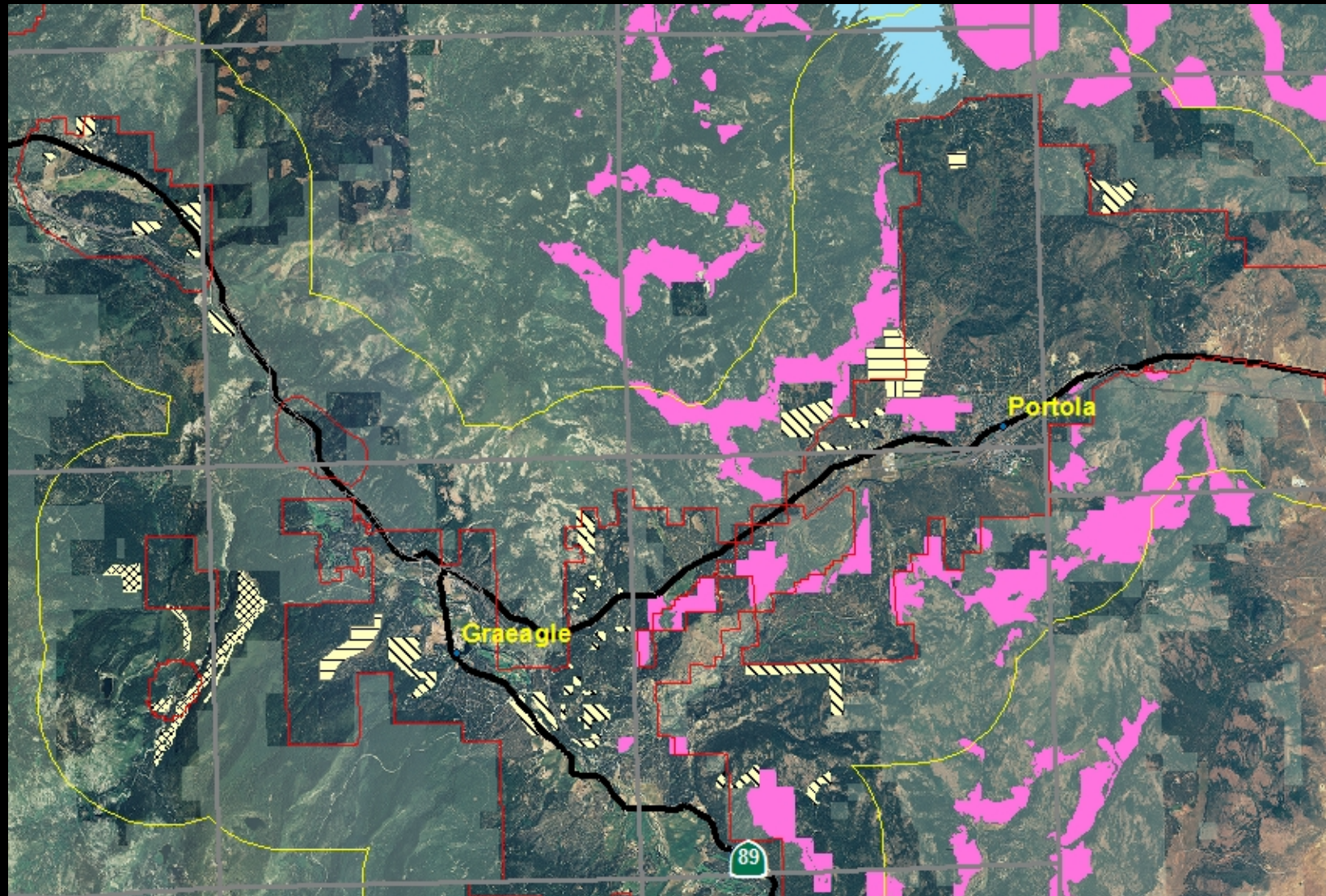
Graeagle & Portola area Fuel Reduction Accomplishments

Federal Treatments



Graeagle & Portola area Fuel Reduction Accomplishments

All Treatments



Pre-Fire Fuel Treatment

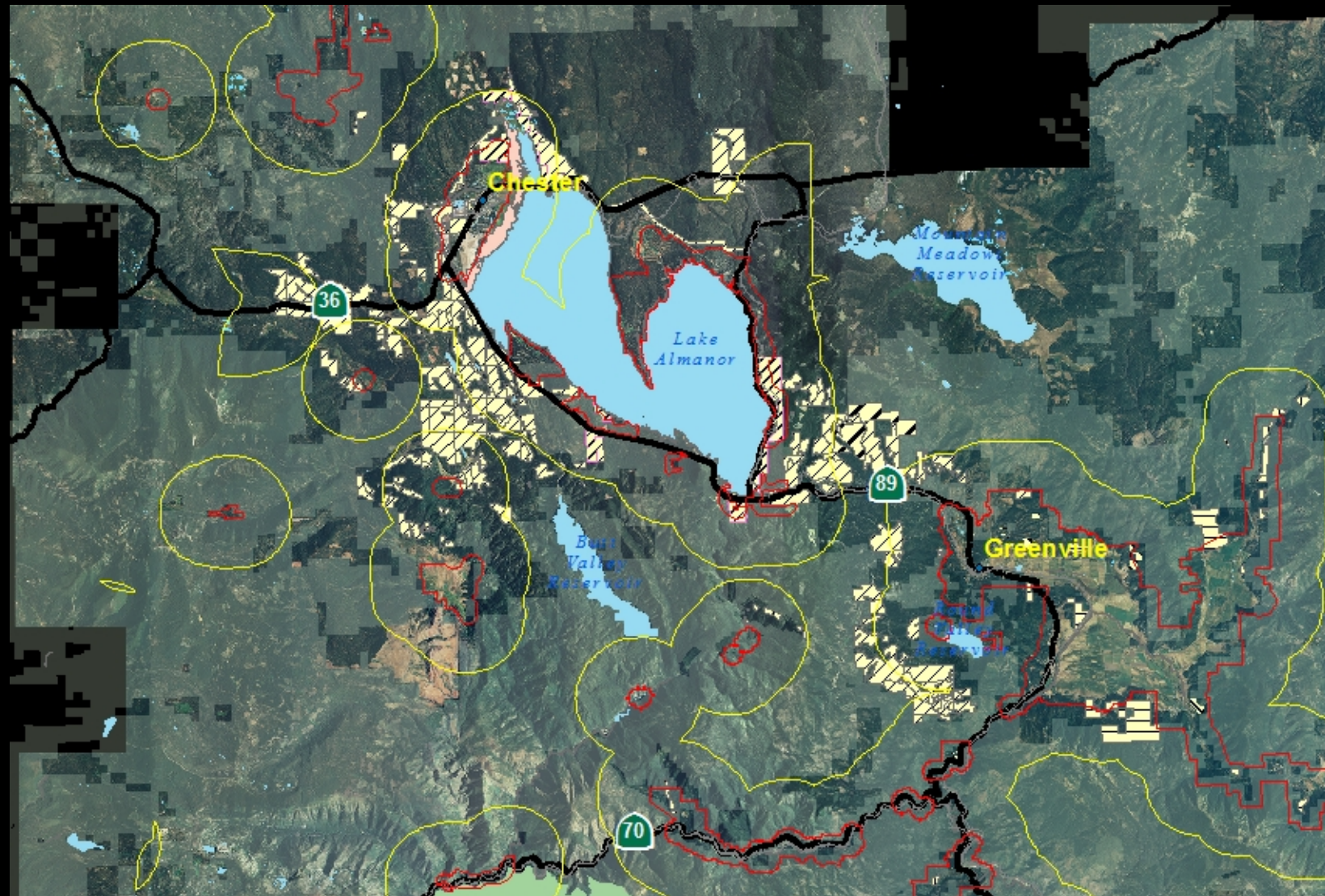


Lake Almanor Basin Fuel Reduction Accomplishments



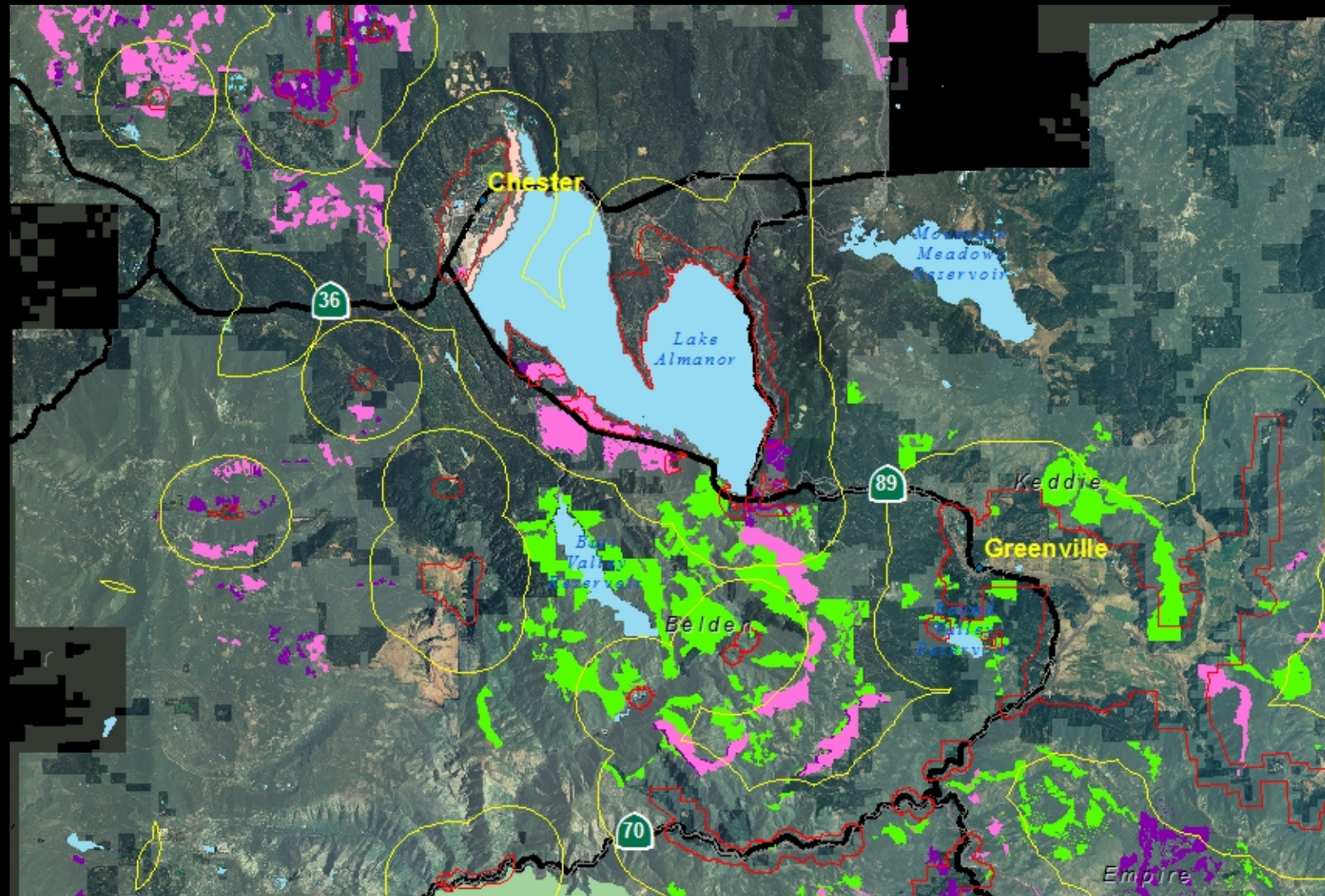
Lake Almanor Basin Fuel Reduction Accomplishments

Non-Federal Treatments



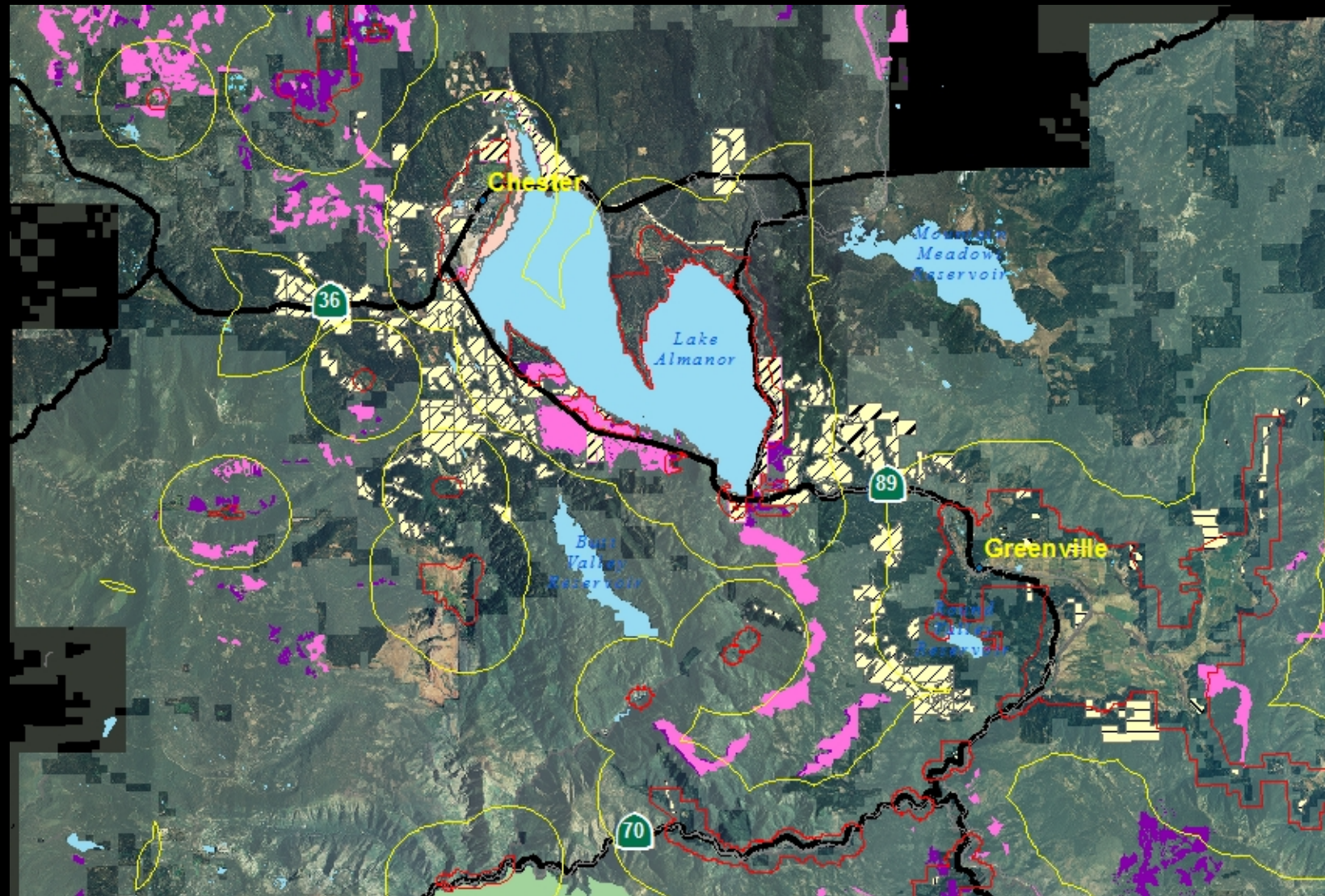
Lake Almanor Basin Fuel Reduction Accomplishments

Federal Treatments

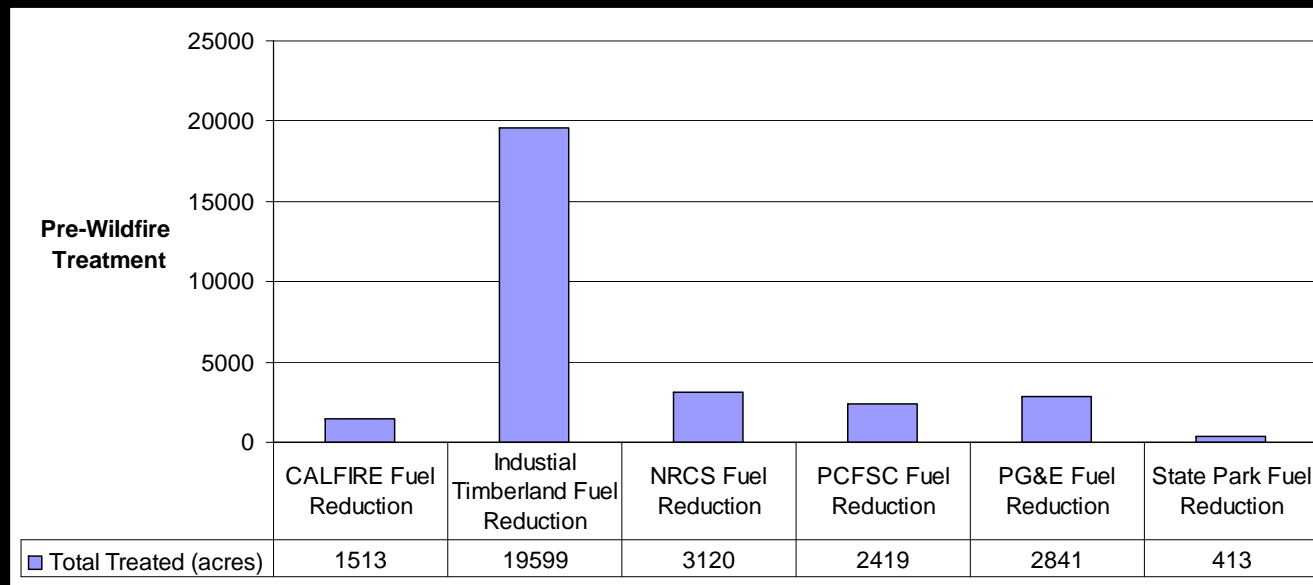
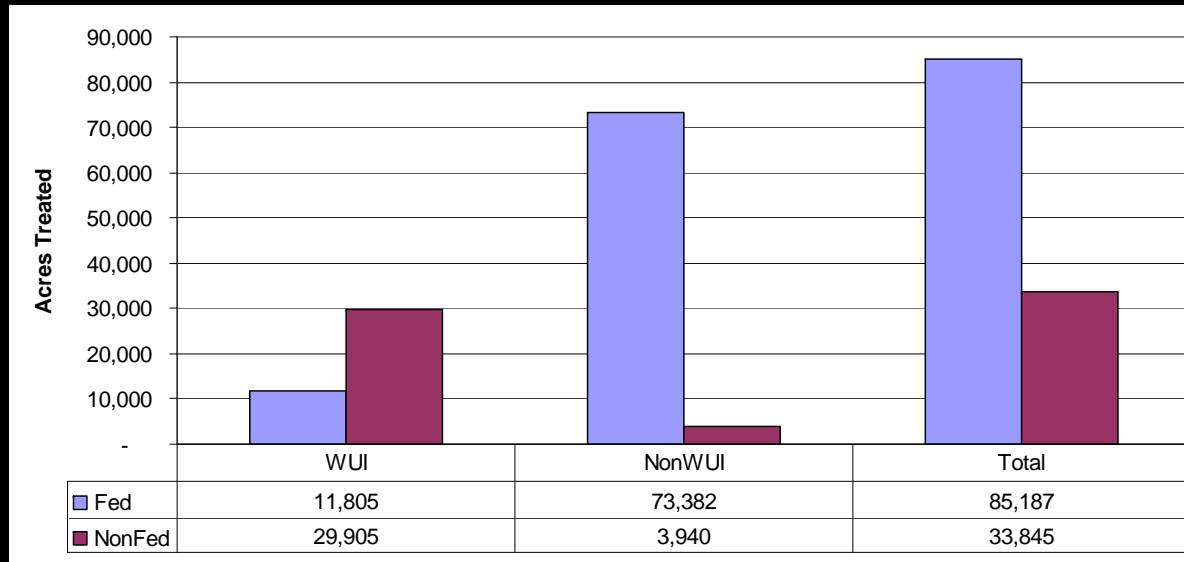


Lake Almanor Basin Fuel Reduction Accomplishments

Non-Federal & Federal Treatments



Plumas County Pre-fire Treatment Acres



Monitoring & Research

- National Forest
 - HFQLG Monitoring Team
 - Habitat, forest structure, Best Management Practices, soil, sensitive plant protection, nox. Weeds, fire/fuel and air quality, watershed condition, stream condition inventory
 - Plumas Lassen Administrative Study
 - Fuel & fire, vegetation, owl, land birds, small mammals
- Fire Safe Council
 - UCCE

Questions??

